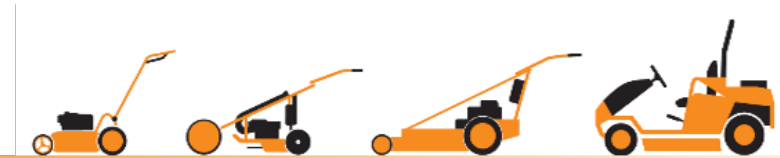




# AS Motor ride-on Allmähers

Product Presentation – AS 800 / 799



**HOCHGRAS PERFORMANCE**

MADE IN GERMANY

# AS 800 / 799 – table of contents



Tip: You can navigate in the document via mouse-over click – click page number and click [www.as-motor.de](http://www.as-motor.de) to return to the table of contents.

## AS 800 / 799 device concept

- Main features and main arguments p. 4
- Model overview p. 5
- Device structure p. 6
- Application areas p. 7

## AS 800 / 799 engine

- Overview p. 9
- Engine technology p. 10
- Fuel tank / battery p. 12
- Air filter / engine oil p. 13

## AS 800 / 799 drive

- Overview p. 15
- Front axle / steering p. 16
- Rear axle p. 17
- Hydrostatic drive / brake p. 18

## AS 800 / 799 – mower deck

- Overview p. 20
- Blade system / grass placement p. 21
- Suspension / height adjustment / engagement of the blade p. 22

## AS 800 / 799 – operating elements

- Overview p. 24
- Overview of operating elements p. 25
- Seat and seat spring package p. 26
- Drive lever and throttle lever p. 27

## AS 800 / 799 accessories / technical data

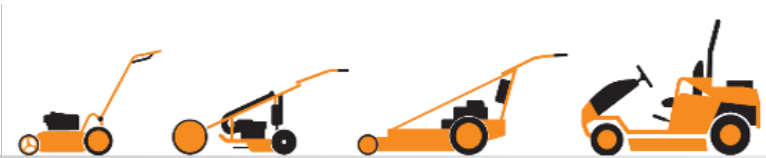
- Accessories p. 29
- Technical data p. 31

# AS 800 / 799 device concept

Main features and main arguments

Model overview / device structure

Application areas / target groups



**HOCHGRAS PERFORMANCE**

MADE IN GERMANY

# AS 800 / 799 – device concept

Main features and main arguments 1/1



**Manoeuvrable  
and agile**

**Safe and  
comfortable**



**Excellent  
layplan**

# AS 800 / 799 – device concept

## Model overview 1/1



- AS 799 Rider with hydrostatic rear wheel drive, closed mowing deck and extended seating position. Ideal for angled, level private plots with growth heights of up to 60 cm



- AS 800 FreeRider with hydrostatic rear wheel drive and differential lock, closed mowing deck with cross blade system and extended seating position. Ideal for angled private plots even with slight slopes and growth heights of up to 80 cm



# AS 800 / 799 – device concept

## Device structure 1/1



- Perimeter and stable tubular frame
- Stable bumper in AS-Motor design
- Galvanised sheet steel on front and aluminium plate side cladding and floor panel
- In spite of high-quality materials and stability, designed with focus on lightweight construction
- Outstanding sitting comfort through bucket seat and optional seat suspension



- ✓ High stability and torsional rigidity at heavy load
- ✓ Aluminium plate at points subject to particular stress – for maximum stability
- ✓ Optimal power-to-weight ratio with concurrent high stability of body and chassis.
- ✓ Optimal comfort with the optional seat suspension



# AS 800 / 799 – device concept

Application areas 1/1



## AS PRODUCTS

	Maximum work rate in m <sup>2</sup> /hour (V <sub>Max</sub> x cutting width)	Maximum undergrowth height in cm
<b>RIDE-ON MOWER</b>		
AS 799 Rider	6.400	60
AS 800 Freerider	6.400	80

## AS PRODUCTS

	Gradient suitability Level > rising > very steep	Professional use	Mowing deck	Drive
<b>RIDE-ON MOWER</b>				
AS 799 Rider			Mowing with rear discharge	Rear wheel drive hydrostatic
AS 800 Freerider		■	Mulching with rear discharge	Rear wheel drive hydrostatic

■ Suitable

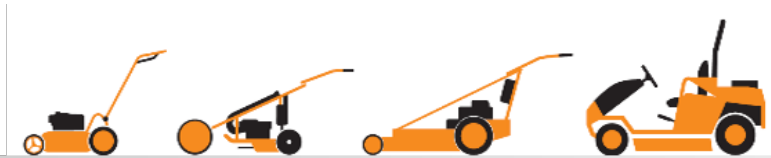
■ Recommended

# AS 800 / 799 – engine

Overview

Engine technology, fuel tank

Fuel tank, air filter



**HOCHGRAS PERFORMANCE**

MADE IN GERMANY



# AS 800 / 799 – engine

## Overview 1/1



- AS 799 Rider: Briggs & Stratton 4-stroke 1-cylinder OHV engine, Series 3 PowerBuilt with 344 ccm displacement and 8.8 hp (6.5 kW) rated power at 3,200 rpm.
- AS 800 FreeRider: Briggs & Stratton 4-stroke 1-cylinder OHV engine, Series 3 Intek with 344 ccm displacement and 10.3 hp (7.6 kW) rated power at 3,200 rpm pressure lubrication
- Ideal accessibility for daily maintenance tasks
- Large tank volume (15-litre), maintenance-free battery



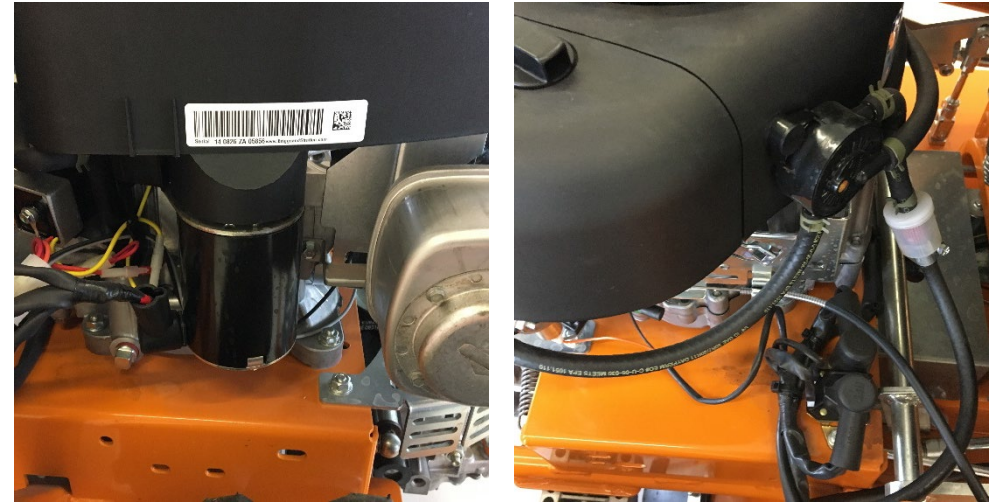
- ✓ Stable engine cover with optimal accessibility for daily maintenance tasks
- ✓ Large fuel reserve and reduced fuel consumption
- ✓ Optimal air circulation and easy separation of suctioned-in leaves and grass, via grille (AS 800)
- ✓ Suitable for working on slopes – to 18 degree incline – thanks to oil pump (AS 800)

# AS 800 / 799 – engine

## Engine technology (AS 799 Rider) 1/2



- AS 799 Rider: B&S 4-stroke, 1-cylinder Series 3 PowerBuilt
- Grey cast iron cylinder sleeve for long service life and minimal oil consumption and OHV (OverHead Valve) technology
- Fuel pre-filter with transparent case
- Electric start with choke Magnetron® electronic ignition system
- AVS® – Anti-Vibration System



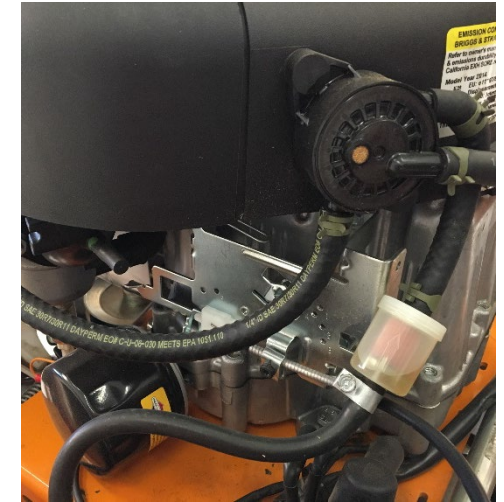
- ✓ OHV – optimised performance, long engine service life and low fuel consumption
- ✓ Magnetron® – ensures easy start and it is maintenance-free
- ✓ Less vibration thanks to AVS® – patented linear compensation system

# AS 800 / 799 – engine

## Engine technology (AS 800 Rider) 2/2



- AS 800 Rider: B&S 4-stroke, 1-cylinder Series 3 Intek
  - Pressure lubrication with oil filter
  - Grey cast iron cylinder sleeve for long service life and minimal oil consumption and OHV (OverHead Valve) technology
  - Fuel pre-filter with transparent case
  - Electric start with choke Magnetron® electronic ignition system
  - AVS® – Anti-Vibration System
- ✓ Controlled feed of clean oil to the bearing surfaces in the crankcase for a long service life and suitability for working on slopes
  - ✓ OHV – optimised performance, long engine service life and low fuel consumption
  - ✓ Magnetron® – ensures easy start and it is maintenance-free
  - ✓ Patented linear compensation system - AVS®





# AS 800 / 799 – engine

## Fuel tank, battery 1/1



- 15-litre tank capacity (normal petrol)
- Tank with reserve function (reserve position / approx. 1 litre)
- The tank is positioned in the front of the vehicle – thus there is a clear separation of tank and engine
- Ergonomic tank shape for maximum legroom
- Maintenance-free battery in protected position under the fuel tank with easy accessibility



- ✓ Large tank volume for long deployments
- ✓ Reserve function for high operational safety
- ✓ Large filler neck for convenient fuelling
- ✓ Thanks to the clear separation from the engine there is no heat load of the tank / fuel

# AS 800 / 799 – engine

## Air filter / engine oil 1/1



- Paper air filter cartridge with easy accessibility for cleaning and replacement
- Optimised air circulation through top intake and additional grille (AS 800) in the engine cover
- Complete one-piece engine cover with maintenance openings for AS 800
- Factory-standard SAE 30 for low consumption (normal summer operation) or optional synthetic engine oil (5W30) for maximum performance also under 5° C



- ✓ Air filter offers ideal protection against contaminated air in the engine for consistent high-performance
- ✓ Long maintenance intervals and easy accessibility for standard maintenance tasks
- ✓ Optimal air circulation and easy separation of suctioned-in leaves and grass (AS 800)
- ✓ Different oils are possible for different requirements

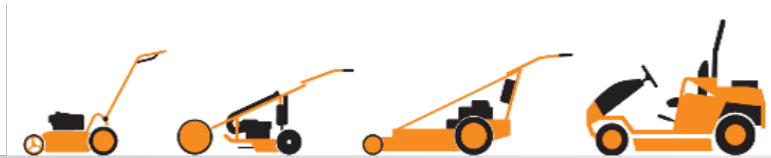


## **AS 800 / 799 – drive**

Overview

Front axle / steering

Rear axle, hydrostatic drive / brake



**HOCHGRAS PERFORMANCE**

MADE IN GERMANY



# AS 800 / 799 – drive

## Overview 1/1



- Lubricated pendulum axle with tight turning radius and automatic straight-ahead course
- Robust rear axle with hydrostatic drive, indirect drive via chain drive and field stud tyres
- Optimal cooling for intensive continuous use without overheating and transmission damage
- Foot pedal for brake and limited-slip differential for AS 800



- ✓ Contiguous ground contact through pendulum axle
- ✓ Easy-movement steering and ergonomic AS-Motor Sherpa steering wheel
- ✓ Maintenance-free hydrostatic transmission
- ✓ High performance at low weight – low oil temperature thanks to effective cooling – long service life
- ✓ Limited switch differential and panic pedal for brake with AS 800 for improved suitability for working on slopes

# AS 800 / 799 – drive

## Front axle / steering 1/1



- Lubricated pendulum bearing with adjustable tie rods
- Tyres: AS (Acker-Stollen (field cleats)) 13x5.00-6 – ideally suited for use on uneven terrain
- Ergonomic Sherpa steering wheel and minimal steering forces through reduction in the gear segment
- Front axle geometry optimised for automatic straight-ahead course through lifting of the wheels
- Tight turning radius of 120 cm



- ✓ Contiguous ground contact through pendulum axle
- ✓ Easy-movement steering and ergonomic steering wheel
- ✓ Automatic straight-ahead course for precise bout tracking when working on large areas
- ✓ Tight turning radius for working on small areas and around trees and bushes



# AS 800 / 799 – drive

## Rear axle 1/1



- Robust rear axle with variable hydrostatic transmission and indirect drive via chain drive on the rear wheels
- Tyres: AS (Acker-Stollen (field cleats)) 16x6.50-8
- Drive speed, forward: 0-8 km/h variable
- Drive speed, reverse: 0-6 km/h variable
- Limited slip differential via foot pedal for AS 800 – rear wheels are both driven when differential is activated



- ✓ Robust design with chain drive for high-efficiency transmission of force
- ✓ Field cleat tyres for ideal traction on uneven and moist terrain
- ✓ Limited-slip differential with AS 800 for even better traction

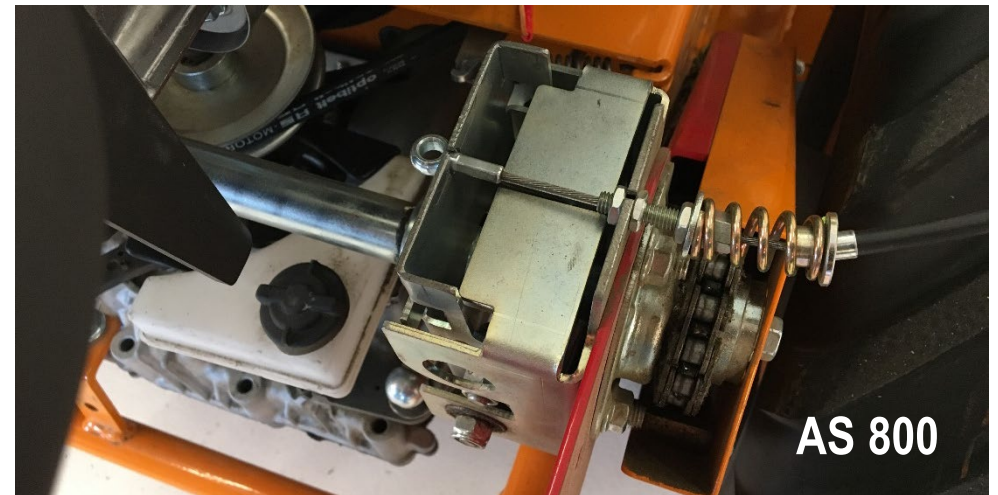
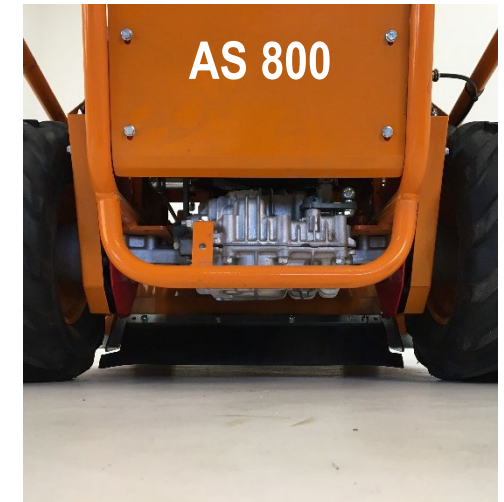


# AS 800 / 799 – drive

## Hydrostatic drive / brake 1/1



- Robust hydrostatic drive with large cooling blower
- Easy access to unlock the transmission
- High performance at low weight – low oil temperature thanks to effective cooling – long service life
- Integrated safety brake/parking brake – disc brake + zero-position spring. Purely mechanical – the engine does not have to be running – downhill speed via transmission
- Additional foot pedal for brake (AS 800)



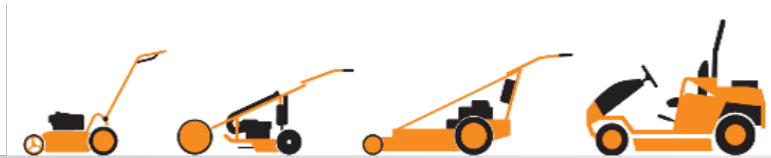
- ✓ Optimal cooling for intensive continuous use without overheating and transmission damage
- ✓ Fully synthetic oil, SAE 10W-30 - the same oil that is used for the engine
- ✓ Easy unlock for moving the machine in enclosed spaces
- ✓ High safety through integrated / automatic brake and 100% braking capacity even if the engine is not running

## **AS 800 / 799 – mower deck**

Overview

Blade system / grass placement

Suspension / height adjustment / engagement of the blade



**HOCHGRAS PERFORMANCE**

MADE IN GERMANY



# AS 800 / 799 – mower deck

## Overview 1/1



- The mowing deck is made of steel, has side skids and a flexibly mounted mowing deck suspension
- 80 cm cutting width with closed mower deck
- AS 799: Mower deck with single sickle blade
- AS 800: Mower deck with cross-blade system
- Manual central height adjustment in 4 levels
- Safety via mechanical shut-down in transport position



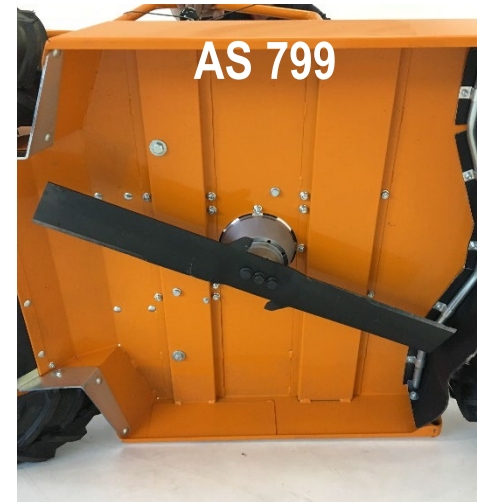
- ✓ Cuttings remain longer in the mow unit bonnet, are discharged to the rear between the wheels
- ✓ High work rates of up to 6,400 m<sup>2</sup> per hour. Effortlessly handles growth heights to 80 cm (AS 799 = 60 cm); chops high grass into mulch.
- ✓ Stored swinging mower deck
- ✓ Safety precautions are functional even if the engine is not running, thanks to mechanical shut-off

# AS 800 / 799 – mower deck

## Blade system / grass placement 1/1



- 80 cm cutting width over the full device width
- AS 799: Mower deck with single sickle blade and central grass placement between the wheels
- AS 800: Closed mower deck with cross-blade system for even better mulching result, and central grass placement between the wheels
- Lateral closed mower deck with stable blade carrier and protective cloth on the mower deck inlet



- ✓ No driving over unmown grass and no driving over mown grass for best traction
- ✓ High work rates of up to 6,400 m<sup>2</sup> per hour. Effortlessly handles growth heights to 80 cm (AS 799 = 60 cm); chops high grass into mulch.
- ✓ Cuttings remain longer in the closed mow unit bonnet, are discharged to the rear and they remain between the wheels

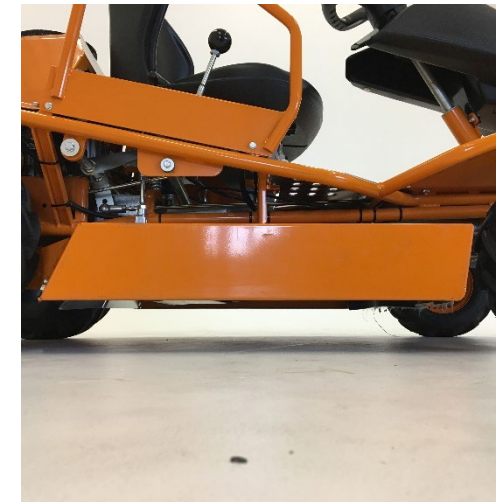
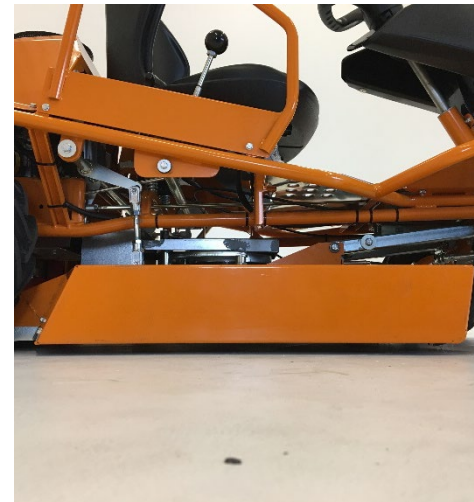


# AS 800 / 799 – mower deck



Suspension / height adjustment / engagement of the blade 1/1

- Side skids and swinging mower deck suspension
- Manual central height adjustment in 4 levels
- Ease of motion through special kinematics
- Cutting height: 35-85 mm (AS 799 and AS 800)
- Additional transport position – stops the mower drive automatically
- Mechanical engagement of the mower deck – engagement element is conveniently positioned next to the height adjustment element



- ✓ Mower deck can give way upward – e.g. when driving on uneven terrain – the blade does not touch the ground – no damage
- ✓ 4 different cutting heights and transport position
- ✓ It is not possible to start the mower deck in transport position – high level of safety when changing over and loading
- ✓ Seat contact switch and blade brake for automatic stopping of the engine, when the operator gets out of the seat

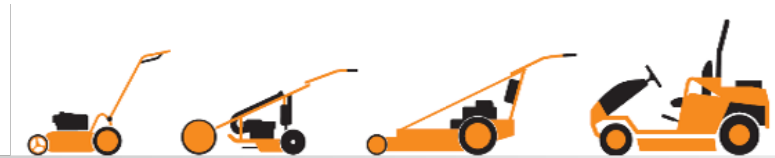
# AS 800 / 799 – operating elements

Overview

Overview of operating elements

Seat and seat spring package (optional)

Drive lever and throttle lever



**HOCHGRAS PERFORMANCE**

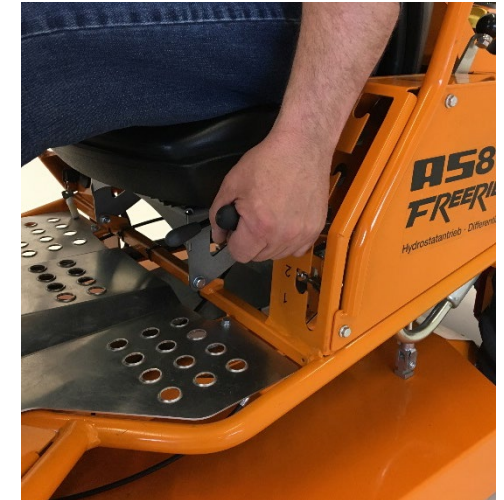
MADE IN GERMANY

# AS 800 / 799 – operating elements

## Overview 1/2



- Ergonomic sitting position in the adjustable bucket seat
- Driver sits deep "in" the machine – low centre of gravity
- The steering wheel flattened on the bottom and the slender tank shape ensure ample leg room and freedom of movement.
- Logical and ergonomic arrangement of all operating elements
- Minimal operating forces for height adjustment thanks to special kinematics



- ✓ Due to the sitting position and the support possibility with the feet, the driver always has a safe drive feel.
- ✓ Easy and logical operation of all operating elements
- ✓ High-level safety and driver protection through ergonomic arrangement of the operating elements
- ✓ Side grass (undergrowth) deflector



# AS 800 / 799 – operating elements

## Overview of operating elements 2/2



- Foot pedal limited-slip differential (only AS 800)
- Steering wheel
- Cutting height adjustment element
- Mower unit engagement
- Grass/undergrowth deflector
- Foot pedal emergency brake (AS 800 only – places drive lever in middle position)
- Ignition key
- Drive lever
- Throttle lever / choke
- Grass/undergrowth deflector

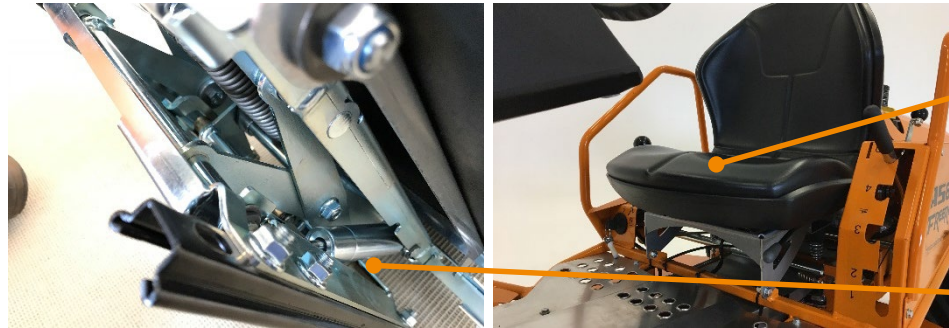


# AS 800 / 799 – operating elements

## Seat and seat spring package (optional) 1/1



- AS-Motor bucket seat
- Ergonomic sitting position, regardless of body size and build.
- Easy adjustment forward and back
- Individual adjustment of spring comfort to the weight of the driver with the optional spring package



- Bucket seat (without spring package) for optimal lateral support
- Optional spring package with suspension cylinder



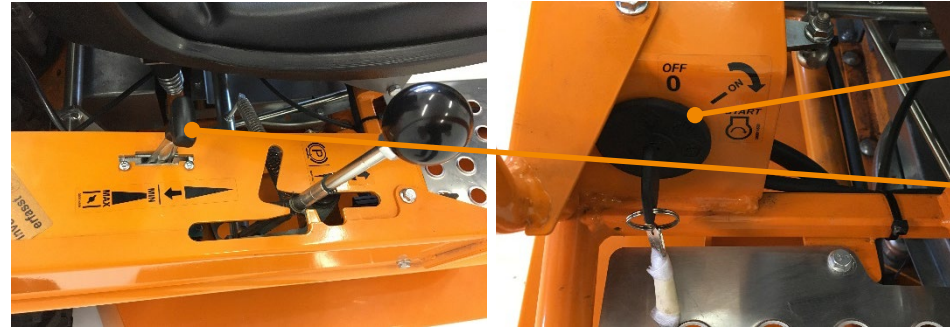
- Adjustment of spring stiffness (for approx. 60 - 120 kg body weight)
- Adjustment of the sitting position

# AS 800 / 799 – operating elements

## Drive lever and throttle lever 1/1



- Ergonomic drive lever
- Traction drive control exclusively via drive lever – NO foot pedal activation
- Middle position automatically engages the brake for high-level safety
- Throttle lever and choke arranged in one lever – lowest position idle position – topmost position choke



- Ignition lock
- Throttle lever and choke

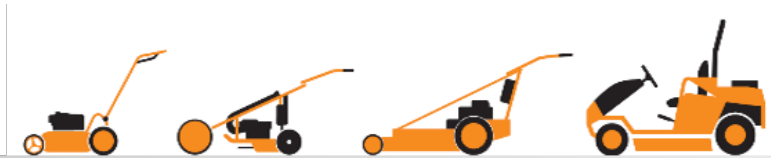


- Drive lever in position forward

# AS 800 / 799 accessories / technical data

Accessories

Technical data



**HOCHGRAS PERFORMANCE**

MADE IN GERMANY



# AS 800 / 799 – accessories

## Overview 1/2



- AS-Motor offers a variety of accessories for the ride-on Allmähers
- For the most part, the accessories from AS-Motor are developed and built directly in the plant
- For example, trailer, hitch, snow blade, lawn tyres and much more



- ✓ Individual adaptation and extension of the vehicle to meet the respective requirements
- ✓ 100% custom-tailored for the devices from AS-Motor

# AS 800 / 799 – accessories

Overview 2/2



<b>Accessories</b>	<b>799 Rider</b>	<b>800 Freerider</b>
Trailer	X	X
Trailer hitch	X	X
Snow blade without adapters	X	X
Adapter + operating elements for snow blade	X	X
Snow chains	X	X
Seat suspension kit	X	X
Lawn tyres front	X	X
Lawn tyres, rear	X	X
Operating hour meter	X	X
Inclinometer	X	X
Steering wheel knob	X	X
Liquide tyre Sealant "Plattfuss-Stop"	X	X

# AS 800 / 799 – technical data

Engine / drive / mower deck 1/3



Model	799 Rider	800 Freerider
<b>Engine</b>		
Engine, design	1 cyl. 4-stroke	1 cyl. 4-stroke
Manufacturer	Briggs & Stratton	Briggs & Stratton
Type	Series 3 PowerBuilt	Series 3 Intek
Displacement in cm <sup>3</sup>	344	344
Rated power (kW / hp)	6.5 / 8.8	7.6 / 10.3
Max. power (kW / hp)	7.8 / 10.6	9.7 / 13.0
Engine speed rated capacity in rpm	3200	3200
Starting device	Electric start	Electric start
<b>Drive</b>		

Model	799 Rider	800 Freerider
Traction drive, type	Rear wheel drive	Rear-wheel drive, limited-slip differential
Drive front	No drive	No drive
Forward speed in km/h	0 - 8	0 - 8
Reverse speed in km/h	0 - 6	0 - 6
Turning radius in meters	1.2	1.2
<b>Mower deck</b>		
Cutting device, type	Single sickle blade	Sickle blade with cross-blade mulch system
Cutting width in cm	80	80
Cutting height in mm	35 - 85	35 - 85

## AS 800 / 799 – technical data

Mower deck / dimensions and weights / fill quantities / noise 2/3



Model	799 Rider	800 Freerider
<b>Mower deck</b>		
Transport position in mm	100	100
Number of levels	4	4
Drive, cutting tool	V-belts	V-belts
Clutch, cutting tool	Belt clutch	Belt clutch
Growth height	60	80
<b>Dimensions and weights</b>		
Weight in kg	204	231
Operating dimensions L/W/H in cm	170/87/96	170/87/96
Max. trailing load in kg	100	100

Model	799 Rider	800 Freerider
Max. drawbar load in kg	25	25
<b>Fill quantities</b>		
Fuel tank (litres / type)	15 / normal petrol	15 / normal petrol
Engine oil (litres / type)	1.4 / SAE 30	1.4 / SAE 30
Gear oil (litres / type)	1.95 / SAE 10W-30 or 10W-60	1.95 / SAE 10W-30 or 10W-60
<b>Noise level</b>		
Sound power level LwA (dB in accordance with DIN EN 12733)	98.3	99.0
Sound power level at the operating station LpA (dB in accordance with DIN EN 12733)	85.0	87.0



# AS 800 / 799 – technical data

Tyre designation / stability 3/3

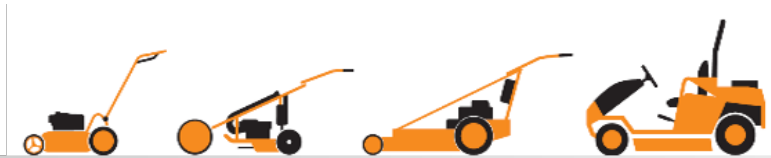


<b>Model</b>	<b>799 Rider</b>	<b>800 Freerider</b>
<b>Tyre designation</b>		
Front	13x5.00-6	13x5.00-6
Rear	16x6.50-8	16x6.50-8
Stability, transverse (in accordance with the standard measurement method)	18	18
Stability, uphill / downhill	n/a	n/a



# AS Motor ride-on Allmähers

Thank you for your attention!



**HOCHGRAS PERFORMANCE**  
MADE IN GERMANY